



# PRODUCT CATALOG



**TRANSFORMING TECHNOLOGIES**

*OUTSTANDING ALTERNATIVES IN STATIC CONTROL*

**STATIC CONTROL PRODUCTS**

---

## SINGLE WIRE WRIST STRAPS

### Features

Single Wire Wrist Strap sets are a versatile and effective method of grounding personnel that allows the skin to breathe. The band uses hypoallergenic silver-plated nylon thread for conductivity paired with 6' or 12' coil cords. The band is standard with a 4mm snap, but 7mm and 10mm are available.



#### WB1600 Series



#### Two Colors and Three Snap Sizes Available!

##### Specifications:

- Hypoallergenic Fabric Band
- Resistor: 1 Meg
- Three Snap Sizes Available
- Available in Maroon in a 4mm Snap

Part Numbers	Series	Snap Size	Cord Length	Color
WB1637	WB1600	4mm	6'	Blue
WB1643	WB1600	4mm	12'	Blue
WB1738	WB1600	7mm	6'	Blue
WB1744	WB1600	7mm	12'	Blue
WB1839	WB1600	10mm	6'	Blue
WB1845	WB1600	10mm	12'	Blue
WB2637	WB1600	4mm	6'	Maroon
WB2643	WB1600	4mm	12'	Maroon
WB0016	WB1600	4mm	Band Only	Blue
WB0017	WB1600	7mm	Band Only	Blue
WB0018	WB1600	10mm	Band Only	Blue
WB0026	WB1600	4mm	Band Only	Maroon
WB4016	WB4000	4mm	Band Only	Blue
WB4037	WB4000	4mm	6'	Blue
WB4043	WB4000	4mm	12'	Blue
WB6014 <sup>1</sup>	WB6000	4mm	Band Only	Black
WB6037 <sup>1</sup>	WB6000	4mm	6'	Black
WB6043 <sup>1</sup>	WB6000	4mm	12'	Black
WB8016	WB8000	4mm	Band Only	Blue
WB8037	WB8000	4mm	6'	Blue
WB8043	WB8000	4mm	12'	Blue
WB9037A <sup>1</sup>	WB9000	4mm	6'	Black
WB9043A <sup>1</sup>	WB9000	4mm	12'	Black
WB9037S <sup>1</sup>	WB9000	4mm	6'	Black
WB9043S <sup>1</sup>	WB9000	4mm	12'	Black
WB9037M <sup>1</sup>	WB9000	4mm	6'	Black
WB9043M <sup>1</sup>	WB9000	4mm	12'	Black
WB9037L <sup>1</sup>	WB9000	4mm	6'	Black
WB9043L <sup>1</sup>	WB9000	4mm	12'	Black

## DUAL WIRE WRIST STRAPS

### Features

Dual Wire Wrist Straps provide redundancy; even if one dual wire wrist strap conductor is severed, the operator has reliable path-to-ground with other wire. The expandable metal band features a single mono jack fastener capable of reading both sides of the wrist strap. Used with dual wire constant monitors.



#### WB5000 Series

##### Specifications:

- Expandable Speidel Metal Band: Small, Medium, Large
- Color: Black Band, Gray Cord
- Two Conductive Paths
- Compatible with Most Dual Wire Constant Monitors
- Right Angle Coil Cords Available

Part Numbers	Series	Snap Size	Cord Length	Color
WB0025	WB2500	4mm	Band Only	Maroon
WB2580	WB2500	4mm	6'	Maroon
WB2585	WB2500	4mm	12'	Maroon
WB0050 <sup>1,2</sup>	WB5000	3.4mm Phono Plug	Band Only	Black
WB5050 <sup>1,2</sup>	WB5000	3.4mm Phono Plug	5'	Black
WB5100 <sup>1,2</sup>	WB5000	3.4mm Phono Plug	10'	Black
WB5200 <sup>1,2</sup>	WB5000	3.4mm Phono Plug	20'	Black
WB5050R <sup>1,2</sup>	WB5000	3.4mm Phono Plug	5'	Black
WB5100R <sup>1,2</sup>	WB5000	3.4mm Phono Plug	10'	Black
WB5200R <sup>1,2</sup>	WB5000	3.4mm Phono Plug	20'	Black
WB0070	WB7000	3.4mm Phono Plug	Band Only	Blue
WB7050	WB7000	3.4mm Phono Plug	5'	Blue
WB7100	WB7000	3.4mm Phono Plug	10'	Blue
WB7200	WB7000	3.4mm Phono Plug	20'	Blue
WB7050R	WB7000	3.4mm Phono Plug	5'	Blue
WB7100R	WB7000	3.4mm Phono Plug	10'	Blue
WB7200R	WB7000	3.4mm Phono Plug	20'	Blue

## COIL CORDS



##### Specifications:

- Classic Molded Snap
- Swivel Type Banana Jack
- 2.5 mm Polyurethane Coil Insulation
- Snap Sizes: 4mm; 7mm; 10mm

Part Numbers	Snap Size	Cord Length
CC0037	4mm	6'
CC0038	7mm	6'
CC0039	10mm	6'
CC0043	4mm	12'
CC0044	7mm	12'
CC0045	10mm	12'
CC9037	4mm	6'
CC9043	4mm	12'
CC9037R	4mm	6'
CC9043R	4mm	12'
CC9020	4mm	20'

#### DUAL WIRE

CC2080	3.4mm Phono Plug	6'
CC2085	3.4mm Phono Plug	12'
CC3050	3.4mm Phono Plug	5'
CC3100	3.4mm Phono Plug	10'
CC3200	3.4mm Phono Plug	20'
CC3050R	3.4mm Phono Plug	5'
CC3100R	3.4mm Phono Plug	10'
CC3200R	3.4mm Phono Plug	20'

#### INTERCONNECT

CC3000NR	Banana Plug	8'
CC3000NR-S	Banana Plug	8'

<sup>1</sup> Indicates Metal Wrist Band

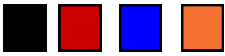
<sup>2</sup> Size options include small (S), medium (M) and large (L)

## HEEL GROUNDERS

### HG1360 Series



Four Colors Available!



Ground mobile personnel with our long-lasting stretch hook and loop ESD heel grounders. The reversible cup design allows for longer life. When one side becomes worn, you can flip the strap over and use the other side. The stretch hook and loop closure strap is made with elastic which creates a comfortable but secure fit around the shoe. The elasticity allows the strap to stretch as you walk. The cup style heel grounder is also available in options with a D-ring hook and loop fastener as well as a buckle strap to provide a snug fit.

Part Number	Cup	Fastener	Color
HG1232	1.38"	Buckle	Blue
HG1246	1.38"	D-Ring	Blue
HG1341	1.25"	Hook and Loop	Blue
HG1360	1.25"	Hook and Loop	Black
HG1360R	1.25"	Hook and Loop	Red
HG1360B	1.25"	Hook and Loop	Blue
HG1360XL	1.25"	Hook and Loop	Black
HG1370	1.25"	Hook and Loop	Orange
HG1380	1.25"	Buckle	Blue
<b>NON MARKING</b>			
HG1360NM	1.25"	Hook and Loop	Blue

### HG6000 Series



**COVERAGE:** Covers Most of the Shoe Sole  
To Ensure Ground Protection Throughout a Full Step

The HG6000 Series sole grounder provides more complete contact with ESD flooring than a regular heel or toe grounder. This is due to a wider and more consistent contact area. These sole grounders provide rapid and complete static dissipation due to constant contact through the entire walking motion. Wearing the conductive ribbon inside the shoe or sock assures proper electrical contact with the user. Available with a 1meg or 2meg resistor built into the sole grounder.

Part Number	Resistor	Fastener	Shoe Size (Men's US)
HG6005	1meg	Hook and Loop	Up to 6
HG6010	1meg	Hook and Loop	7-9
HG6020	1meg	Hook and Loop	10-12
HG6030	1meg	Hook and Loop	12+
HG6052	2meg	Hook and Loop	Up to 6
HG6012	2meg	Hook and Loop	7-9
HG6022	2meg	Hook and Loop	10-12
HG6032	2meg	Hook and Loop	12+

### Hi-Visibility Style Heel Grounder



HG1390S

#### Features

The Hi-Visibility Heel Grounder is constructed from durable materials and features a hi-visibility yellow/green hook and loop closure for easy identification in the work area.

### Toe Grounders



HG2520

#### Features

Toe Grounders are perfect for a wide variety of heeled shoes. Constructed from durable materials and featuring a comfortable elastic closure, the HG2520 provides protection for staff on the move.

### Sport Style Heel Grounders



HG1590(Hook & Loop)  
HG1594(D-Ring)

#### Features

Sport Style Heel Grounders are designed for active wearers and are ideal for boots and cross-training athletic shoes. A highly visible elastic back strap forms to the heel, ensuring proper fit. A Non-Marking version is available.

### Disposable Heel Grounders



HG4560(12")  
HG4560L(24")

#### Features

Disposable Heel Grounders are a single use, economical solution for temporary personnel who enter static controlled environments with ESD flooring. Secures to footwear with a non-damaging adhesive.



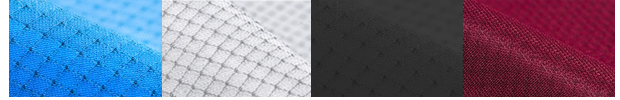


88% Polyester, 12% Carbon

## 8812 Light Weight ESD Jackets

Part Number	Collar	Sleeve	Size
JKC8801-JKC8809	Lapel	Knit Cuff	XS-5XL
JKC8801SP-JKC8809SP	Lapel	Snap Cuff	XS-5XL
JKV8821-JKV8829	V-Neck	Knit Cuff	XS-5XL
JKV8821SP-JKV8829SP	V-Neck	Snap Cuff	XS-5XL
JKV8821SS-JKV8829SS	V-Neck	Short Sleeve	XS-5XL

Add LB (Light Blue), WH (White) or BG (Burgundy) to the end of the part number to designate the color of the Jacket. Short Sleeve is only available in Blue.



## 9010 Medium Weight ESD Jackets



90% Polyester, 10% Carbon

Part Number	Collar	Sleeve	Size
JKC9021-JKC9029	Lapel	Knit Cuff	XS-5XL
JKC9021SP-JKC9029SP	Lapel	Snap Cuff	XS-5XL
JKV9021-JKV9029	V-Neck	Knit Cuff	XS-5XL
JKV9021SP-JKV9029SP	V-Neck	Snap Cuff	XS-5XL

Add LB (Light Blue), WH (White), BK (Black), MR (Maroon) or TL (Teal) to the end of the part number to designate the color

Grey (GY) is stocked in lapel collar knit or snap cuff.

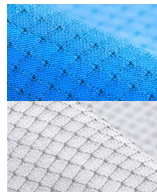
Green (GN), Orange (OR) and Camo (CGY) is stock in lapel collar with snap cuffs.



## 5049 Heavy Weight Cotton ESD Jackets



66% Polyester, 32% Cotton, 2% Carbon



Part Number	Collar	Sleeve	Size
JWC5401-JWC5409	Lapel	Knit Cuff	XS-5XL
JWC5401SP-JWC5409SP	Lapel	Snap Cuff	XS-5XL
JLC5401-JLC5409	Lapel	Knit Cuff	XS-5XL
JLC5401SP-JLC5409SP	Lapel	Snap Cuff	XS-5XL

Add LB (Light Blue) or WH (White) to the end of the part number to designate the color

### CUSTOM EMBROIDERY SERVICES

Customize your companies ESD Jackets with custom embroidery. There is an initial setup fee to digitize your logo and lead time is 2 weeks for most orders.





## ESD Cut Resistant Gloves

The StaticCare™ ESD Cut Resistant Gloves combine powerful cut resistance, comfort and uniform ESD protection into one superior performing glove. The gloves are certified ANSI Cut Level 3 while maintaining softness, flexibility and comfort. A finished knit wrist cuff provides a snug fit to reduce glove slippage and keep debris out. Available with polyurethane coated finger tips or palms to improve grip while maintaining breathability. The gloves may be laundered for repeated use. Sold in packs of 12 pairs.

### GL2500 Series



#### Uncoated



#### Coated Palm



#### Coated Finger Tips



Part Number	Size	Part Number	Size	Part Number	Size
GL2501	XS	GL2501P	XS	GL2501T	XS
GL2502	S	GL2502P	S	GL2502T	S
GL2503	M	GL2503P	M	GL2503T	M
GL2504	L	GL2504P	L	GL2504T	L
GL2505	XL	GL2505P	XL	GL2505T	XL
GL2506	2XL	GL2506P	2XL	GL2506T	2XL

### GL6500 Series



#### Applications:

- ANSI Cut Level 6 Certified
- Nitrile Coated
- Typical Surface Resistance is less than  $10^7$  ohms per ANSI/ESD SP15.1
- Sold As 12 Pair Per Bag

Part Number	Size
GL6501N	XS
GL6502N	S
GL6503N	M
GL6504N	L
GL6505N	XL
GL6506N	2XL

## GL4500 Inspection Gloves

ESD inspection gloves are designed to be worn when handling ESD susceptible items when cleanliness and tactile feel are important. The gloves are made with dissipative ( $10^5$ - $10^8$  ohms) conductive fibers to reduce charge generation. Available with polyurethane coated finger tips, palms and uncoated to minimize fingerprints and scratches on film or other products. Sizes: X-small, Small, Med, Large, X-Large and 2X-Large.

#### Uncoated



#### Coated Palm



#### Coated Finger Tips



Part Number	Size	Part Number	Size	Part Number	Size
GL4501	XS	GL4501P	XS	GL4501T	XS
GL4502	S	GL4502P	S	GL4502T	S
GL4503	M	GL4503P	M	GL4503T	M
GL4504	L	GL4504P	L	GL4504T	L
GL4505	XL	GL4505P	XL	GL4505T	XL
GL4506	2XL	GL4506P	2XL	GL4506T	2XL

## High Temp ESD Hot Glove

Static protection and heat protection in a clean room compatible glove. FG gloves use monofilament Nomex® woven fabric suffused with carbon fiber and enhance the heat protection with a 100% inner insulating tricot knit polyester fabric liner. Gloves resist up to 572° (300C). Available in 11" and 16" in Small, Medium, Large, XL and 2XL.

### FG2600 - Up to 572°F



11"

#### Part Numbers

FG2601	Gloves 11" Small
FG2602	Gloves 11" Med
FG2603	Gloves 11" Large
FG2604	Gloves 11" X-Large

### FG3900 - Up to 572°F



16"

#### Part Numbers

FG3901	Gloves 16" Small
FG3902	Gloves 16" Med
FG3903	Gloves 16" Large
FG3904	Gloves 16" X-Large
FG3905	Gloves 16" 2X-Large

### GL9100 - Up to 302°F



14"

#### Part Numbers

GL9101	ESD Hot Gloves 14" Small
GL9102	ESD Hot Gloves 14" Medium
GL9103	ESD Hot Gloves 14" Large
GL9104	ESD Hot Gloves 14" X-Large

## BFN AC Ionizers Technology

The BFN overhead ionizing blowers combine excellent ESD performance with user friendly features to create the premier overhead ESD workstation solution. The ionizers are equipped with energy efficient LED task lights to help alleviate eye strain and headaches - all while saving on energy costs. User friendly features such as integrated emitter point cleaners, removable front and rear fan guards, and safety switches provide for safe operation and easy maintenance access. BFN spare parts are available for purchase.



BFNG10



BFN801

## BFN AC Ionizers

Part Numbers	Type	Coverage Area
BFN801	Benchtop	1'x5'
BFN802	Two Fan Overhead	2'x3'
BFN803	Three Fan Overhead	2'x4'
BFN8412	Blower	3'x6'
BFNG10	Gun	Point and Shoot



BFN803

## Ptec™ Ionizer Technology

Utilizing the small physical profile of the Ptec™ piezo technology, the IN5120 is small enough to fit inside many electronic manufacturing tools and powerful enough to provide reliable ESD protection. The IN5120 is especially useful in space-constrained applications.



IN5120

## Ptec AC Ionizers

Part Numbers	Type	Coverage Area
IN2000	Benchtop	1'x5'
IN5110	Benchtop	1'x5'
IN5120	Benchtop	1'x4'
IN5130	Overhead	2'x4'
IN5140	Benchtop	1'x5'
IN5500	Benchtop	1'x5'



IN5130

## IN6430 Ionizing Gun



### Features:

- Fast Charge Decay
- Integrated Air/Power Cable
- Optional .01 Micron Filter
- Balanced to 0±30 Volts



## IN6200 Ionizing Gun



### Features:

- Fast Charge Decay
- Quick Release Button
- Included Filter
- Fiberglass enforced Case



## IN1000 StaticAIRE™ Ionizer

### Features:

- Removes Static with No Air Flow
- Ideal Where Space Is Limited or Inside Equipment
- Easy Balance and Decay Adjustment
- Typical Balance: ±25volts



## IN3000 CrossFLOW Extended Range

### Features:

- Fast decay performance
- Quickly Neutralize static charges
- Built in emitter point cleaners
- Heater for user comfort
- 3'x6' coverage area
- ±10volts





## IN4000 AirFlex Ionizing Nozzle



### Features:

- Fast Charge Decay
- Flexible Metal Neck
- Works with IN3425 Nozzle Tips
- Optional .01 Micron Filter (pn FL0030)
- Footswitch or Photoelectric Eye Operation (pn IN4000PE)
- Typical Balance:  $\pm 10$ volts



Photoelectric Eye

## IN4200 AirFlex Ionizing Nozzle



### Features:

- Fast Charge Decay
- Flexible Metal Neck
- Works with IN3425 Nozzle Tips
- Optional .01 Micron Filter (pn FL0030)
- Footswitch or Photoelectric Eye Operation (pn IN4000PE)
- Typical Balance:  $\pm 10$ volts



Photoelectric Eye

## IN3425 Air Ionizing Nozzle



### Features:

- Fast Charge Decay
- Optional Nozzle Tips
- Optional .01 Micron Filter
- Typical Balance:  $\pm 10$ volts
- Available with Photoelectric Switch (p/n IN3425PE)



Photoelectric Eye

### Output Nozzle Options

The IN3425 comes with the N0010 standard nozzle tip. Wide angle, long range, bendable, luer lock or manifold tips may be substituted depending on the application

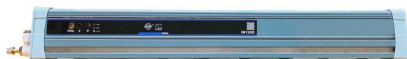
## SCION™ Square Wave AC Technology



Ionizers



IN1200-12: 12"



IN1200-22: 22"



IN1200-44: 44"



IN1200-64: 64"



### Benefits of Scion™ Ionization vs Pulsed DC Ionizers

- Superior ion balance.
- Faster decay times.
- Emitter points that stay cleaner.
- Emitter points that last longer.
- Easy adjustment for a wide range of applications.
- Stable long-term performance.

# ESD TABLE MATTING

## Premium Two Layer Rubber

MT4500 Smooth – 0.080" Thick

Size	Nasa Blue	Royal Blue	Green	Gray
24"x50'	MT4524B	MT4524RB	MT4524GN	MT4524GY
30"x50'	MT4530B	MT4530RB	MT4530GN	MT4530GY
36"x50'	MT4536B	MT4536RB	MT4536GN	MT4536GY
48"x50'	MT4548B	MT4548RB	MT4548GN	MT4548GY

### MT4500 Cut Mats

24"x36"	MT2436B	MT2436RB	MT2436GN	MT2436GY
24"x48"	MT2448B	MT2448RB	MT2448GN	MT2448GY
24"x60"	MT2460B	MT2460RB	MT2460GN	MT2460GY
24"x72"	MT2472B	MT2472RB	MT2472GN	MT2472GY
30"x36"	MT3036B	MT3036RB	MT3036GN	MT3036GY
30"x48"	MT3048B	MT3048RB	MT3048GN	MT3048GY
30"x60"	MT3060B	MT3060RB	MT3060GN	MT3060GY
30"x72"	MT3072B	MT3072RB	MT3072GN	MT3072GY
36"x48"	MT3648B	MT3648RB	MT3648GN	MT3648GY
36"x60"	MT3660B	MT3660RB	MT3660GN	MT3660GY
36"x72"	MT3672B	MT3672RB	MT3672GN	MT3672GY

MT2500 Smooth – 0.060" Thick

Size	Nasa Blue	Royal Blue	Green	Gray
24"x50'	MT2524B	MT2524RB		MT2524GY
30"x50'	MT2530B	MT2530RB		MT2530GY
36"x50'	MT2536B	MT2536RB	MT2536GN	MT2536GY
48"x50'	MT2548B	MT2548RB		MT2548GY

### MT2500 Cut Mats

24"x36"	MTLP2436B	MTLP2436RB	MTLP2436GN	MTLP2436GY
24"x48"	MTLP2448B	MTLP2448RB	MTLP2448GN	MTLP2448GY
24"x60"	MTLP2460B	MTLP2460RB	MTLP2460GN	MTLP2460GY
24"x72"	MTLP2472B	MTLP2472RB	MTLP2472GN	MTLP2472GY
30"x36"	MTLP3036B	MTLP3036RB	MTLP3036GN	MTLP3036GY
30"x48"	MTLP3048B	MTLP3048RB	MTLP3048GN	MTLP3048GY
30"x60"	MTLP3060B	MTLP3060RB	MTLP3060GN	MTLP3060GY
30"x72"	MTLP3072B	MTLP3072RB	MTLP3072GN	MTLP3072GY
36"x48"	MTLP3648B	MTLP3648RB	MTLP3648GN	MTLP3648GY
36"x60"	MTLP3660B	MTLP3660RB	MTLP3660GN	MTLP3660GY
36"x72"	MTLP3672B	MTLP3672RB	MTLP3672GN	MTLP3672GY

MT4000 Textured – 0.080" Thick

Size	Nasa Blue	Royal Blue	Green	Gray
24"x40'	MTT2440B	MTT2440RB	MTT2440GN	MTT2440GY
30"x40'	MTT3040B	MTT3040RB	MTT3040GN	MTT3040GY
36"x40'	MTT3640B	MTT3640RB	MTT3640GN	MTT3640GY
48"x40'	MTT4840B	MTT4840RB	MTT4840GN	MTT4840GY

### MT4000 Cut Mats

24"x36"	MTT2436B	MTT2436RB	MTT2436GN	MTT2436GY
24"x48"	MTT2448B	MTT2448RB	MTT2448GN	MTT2448GY
24"x60"	MTT2460B	MTT2460RB	MTT2460GN	MTT2460GY
24"x72"	MTT2472B	MTT2472RB	MTT2472GN	MTT2472GY
30"x36"	MTT3036B	MTT3036RB	MTT3036GN	MTT3036GY
30"x48"	MTT3048B	MTT3048RB	MTT3048GN	MTT3048GY
30"x60"	MTT3060B	MTT3060RB	MTT3060GN	MTT3060GY
30"x72"	MTT3072B	MTT3072RB	MTT3072GN	MTT3072GY
36"x48"	MTT3648B	MTT3648RB	MTT3648GN	MTT3648GY
36"x60"	MTT3660B	MTT3660RB	MTT3660GN	MTT3660GY
36"x72"	MTT3672B	MTT3672RB	MTT3672GN	MTT3672GY

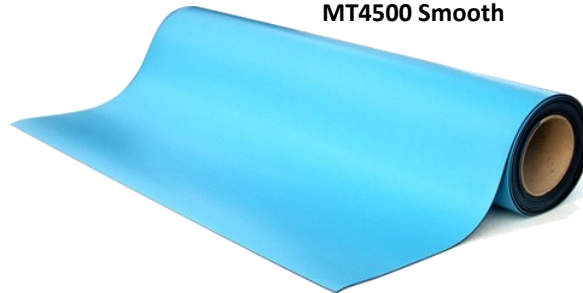
Size	Part Number
2'x2' Red Kit	FSM2424R
2'x2' Red Female Mat	FSM2424R-F
2'x2' Red Male Mat	FSM2424R-M
2'x2' Blue Kit	FSM2424B
2'x2' Blue Female Mat	FSM2424B-F
2'x2' Blue Male Mat	FSM2424B-M

### Specification:

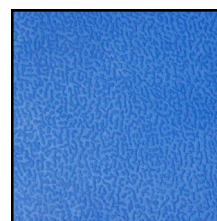
- Color: Blue or Red
- Two 8" x 12" Pockets with snaps
- Adjustable WB1637 Fabric Wrist Band Set
- CP1518 Ground Cord with Bull Dog Clip
- 24"x24" Mat



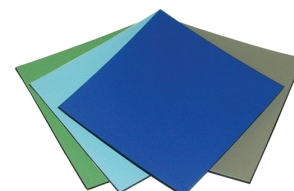
MT4500 Smooth



MT4500 Cut Mats

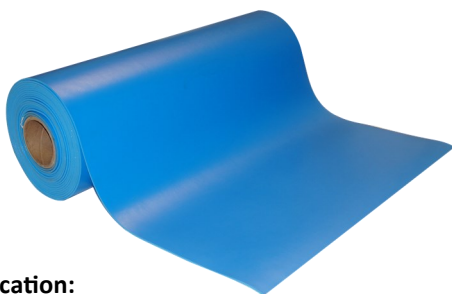


MT4000 Textured





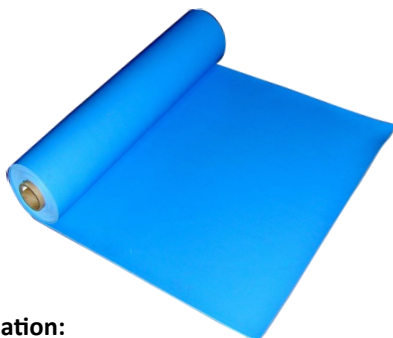
## VinylSTAT™ B - Three Layer Vinyl with Foam Back



### Specification:

- Three Layer with Foam Backing
- Resistance:  $10^7$ - $10^8$  ohms
- Meets ESD Industry Standards
- 0.125" Thick

## VinylSTAT™ C - Homogeneous Vinyl



### Specification:

- Resistance:  $10^7$ - $10^8$  ohms
- Meets ESD Industry Standards
- 0.093" Thick

Part Number	Size	Thickness
VMA2450B	24"x50'	0.093"
VMA3050B	30"x50'	0.093"
VMA3650B	36"x50'	0.093"
VMA4850B	48"x50'	0.093"
VMA2448B	24"x48"	0.093"
VMA2472B	24"x72"	0.093"
VMA3648B	36"x48"	0.093"
VMA3672B	36"x72"	0.093"
VMB2450B	24"x50'	0.125"
VMB3050B	30"x50'	0.125"
VMB3650B	36"x50'	0.125"
VMB4850B	48"x50'	0.125"
VMB2448B	24"x48"	0.125"
VMB2472B	24"x72"	0.125"
VMB3648B	36"x48"	0.125"
VMB3672B	36"x72"	0.125"
VMC2450B	24"x50'	0.093"
VMC3050B	30"x50'	0.093"
VMC3650B	36"x50'	0.093"
VMC4850B	48"x50'	0.093"
VMC2448B	24"x48"	0.093"
VMC2472B	24"x72"	0.093"
VMC3648B	36"x48"	0.093"
VMC3672B	36"x72"	0.093"
VMD2450B	24"x50'	0.0625"
VMD3050B	30"x50'	0.0625"
VMD3650B	36"x50'	0.0625"
VMD4850B	48"x50'	0.0625"
VMD2448B	24"x48"	0.0625"
VMD2472B	24"x72"	0.0625"
VMD3648B	36"x48"	0.0625"
VMD3672B	36"x72"	0.0625"
VME2450B	24"x50'	0.375"
VME3050B	30"x50'	0.375"
VME3650B	36"x50'	0.375"
VME4850B	48"x50'	0.375"
VME2448B	24"x48"	0.375"
VME2472B	24"x72"	0.375"
VME3648B	36"x48"	0.375"
VME3672B	36"x72"	0.375"

## GROUNDING HARDWARE

### Low Profile Common

#### Point Ground



CP2522  
CP2524  
CP2522NR

#### CS0122-Stud



#### CS0122-Socket



### Floor Mat Ground Cord



FM1515  
FM1517



CS1090

### Bench Mount Ground



CP4070



AD22

### Part Number

### Description

CP2522	Low Profile Cpt, 15', 1 Meg, Male
CP2524	Low Profile Cpt, 15', 1 Meg, Female
CP2522NR	Low Profile, Cpt, 15', No Resistor, Male
FM1515	Floor Mat Ground, 15', 1 Meg, Male
FM1517	Floor Mat Ground, 15', 1 Meg, Female
GK1000	Table Mat Ground Kit
GK2000	Floor Mat Ground Kit
CP1518	Common Pt Ground, 15', 1 Meg, Male
CP1518-BD	Common Pt Ground, 15', 1 Meg, Female
CP4070	Metal Bench Mount Ground, 4mm, 15', Male
CP4822	Low Profile Quad Cpt, 4mm, 15', Male
FM2525NR	Mat Interconnect Cord, 10', No Resistor
AD22	Outlet Ground Adapter
CS0122-Socket	Snap, 10mm Socket and Rivets
CS0122-Stud	Snap, 10mm Stud and Rivets
CS0123	Screw Snap Set, 10mm Stud
CS0125	Ring Terminal Banana Jack
CS0126-Socket	Stacking Banana Jack Snap, 10mm Socket
CS0126-Stud	Stacking Banana Jack Snap, 10mm Stud
CS0126-Stud/Socket	Stacking Banana Jack Snap, Stud & Socket
CS0127	Molded Banana Jack Snap, Stud & Socket
CS0128	Stud, Connect 10mm Stud to Stud
CS0128-Socket	Socket, Connect 10mm Socket to Socket
CS1010	Clinch Snap, 10mm, Female
CS1020	Clinch Snap, 10mm, Male
CS1090	Universal Snap Kit

## FLOOR MATTING

### FM2 Anti-Fatigue Mats

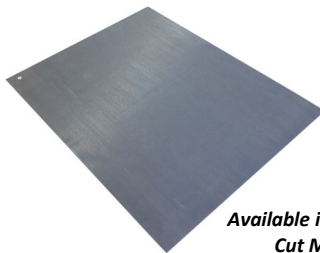


*Available in Rolls or Cut Mats*

**Specifications:**

- Emboss: Tennis
- Thickness: 0.375"
- Resistance:  $10^9 - 9 \times 10^{10}$  ohms
- Spongy Foam
- Available in Grey or Brown

### FM3 V-Groove Floor Runner



*Available in Rolls or Cut Mats*

**Specification:**

- Emboss: V-Groove
- Thickness: 0.125"
- Resistance:  $10^9 - 9 \times 10^{10}$  ohms

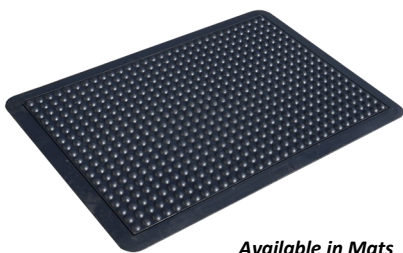
### FM4 Chair/Floor Runner



**Specification:**

- Emboss: Pebble
- Thickness: 0.194"
- Resistance:  $10^7 - 9 \times 10^9$  ohms

### FM5 Anti-Fatigue Mats



*Available in Mats And Runners*

**Specification:**

- Emboss Pattern: Bube
- Thickness: 0.50"
- Resistance:  $10^3 - 10^5$  ohms
- Energizing Responsiveness

### FM6 Anti-Fatigue Mats



*Available in Mats*

**Specification:**

- Emboss Pattern: Pebble
- Thickness: 0.625"
- Resistance:  $5.68 \times 10^7$
- Very Soft
- Beveled Edges

### FM7 ESD Chair Mats & Runners

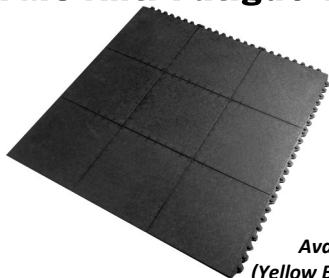


*Available in Rolls or Runners*

**Specification:**

- Emboss: Light Pebble
- Thickness: 0.093"
- Resistance:  $10^3 - 10^5$
- Durable, Ridged Vinyl

### FM8 Anti-Fatigue Tiles

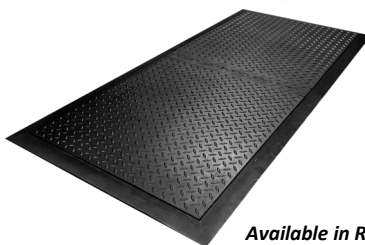


*Available in Tiles (Yellow Borders Available)*

**Specification:**

- Emboss: Light Pebble
- Size: 3' x 3' x 3/4"
- Resistance:  $10^4$  to  $10^6$
- Shock Absorbing Tile

### FM9 Anti-Fatigue Mats



*Available in Runners (End & Center Pieces)*

**Specification:**

- Emboss Pattern: Diamond
- Thickness: 0.50"
- Resistance:  $10^3 - 10^5$  ohms
- Shock Absorbing

### FM10 Conductive Floor Runners



*Available in Rolls or Runners*

**Specification:**

- Emboss: V-groove
- Thickness: 0.125"
- Resistance:  $10^3 - 10^5$
- Non-Slip V-Groove Surface



## CONTINUOUS MONITORS



CM310 (Single Wire)

**SPARTAN**  
CONTINUOUS MONITORS



CM410 (Single Wire)

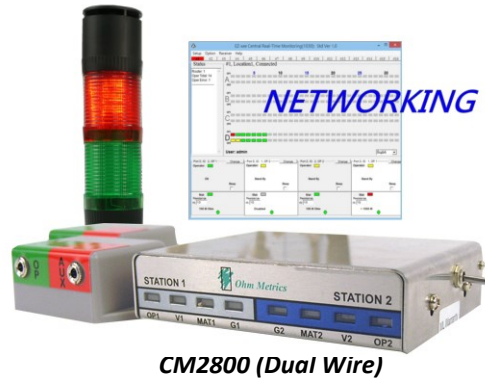
**OhmMETRICS**  
Test & Measurement Equipment



CM1602 (Dual Wire)

**RESISTANCE RANGER**  
DUAL WIRE CONSTANT MONITORS

Part Numbers	Series	Monitors
CM300	Spartan	One Operator
CM310	Spartan	One Operator + One Mat
CM320	Spartan	Two Operators + One Mat
CM400	Ohm Metrics	One Operator
CM410	Ohm Metrics	One Operator + One Mat
CM420	Ohm Metrics	Two Operators + One Mat
CM1600	Ranger	Two Operators + Two Mats
CM1601	Ranger	One Operator
CM1602	Ranger	One Operator + One Mat
CM2800	Ranger	Two Operators + Two Mats
CM2815	Ranger	Two Operators + Two Mats



CM2800 (Dual Wire)

## STATIC FIELD & SURFACE RESISTANCE METERS



7100.3000.MK

### Features:

- Measures Large Test Range
- Measures Temperature and Humidity
- Records Test Values & Creates Reports via USB PC Connection
- Conductive Carrying Case



7100.EFM51

### Features:

- LCD Display
- Battery Operated
- Measurement Range:  
0 - 160 kV (Distance Mode)  
0 - 800 kV (Field Strength Mode)
- Measure Ionizer Decay and Balance (with EFM51 CPS.)
- Perform Walking Test (with EFM51.WT)



7100.SRM200.K

### Features:

- Small, Portable Size
- Read Test Values via USB connection
- Measures Temperature and Humidity
- Power: Replaceable 9V Battery
- Carrying Case
- Optional 5lb Weight Kit Available - SR0065

Part Numbers	Category	Feature
7100.EFM51	Static Field Meter	Pocket Sized
7100.EFM51.CPS	Static Field Meter	Charge Plate & Meter
7100.EFM51.CPS.SET	Static Field Meter	Charge Plate
7100.EFM51.PLUS	Static Field Meter	Conductive Case
7100.EFM51.VK	Static Field Meter	Verification Kit
7100.SRM110	Surface Resistance Meter	Pocket Sized
7100.SRM200.K	Surface Resistance Meter	Data Logging
7100.SRM200.SK51	Surface Resistance Meter	Travel Probes
7100.SRM200.VK	Surface Resistance Meter	Verification Kit
7100.3000.MK	Surface Resistance Meter	Largest Test Range
7100.B530.MK	Surface Resistance Meter	Large Test Range
7100.CPM74	Charge Plate Monitor	Ionizer Verification
7100.WT5000.B	Walking Test Kit	Floor Testing
7100.EFM51.WT	Walking Test Kit	Portable Floor Testing
7110.600.SET	ESD Audit Kit	Complete Test Kit
7110.600.SET.WT	ESD Audit Kit	Complete Test Kit
7110.B530.SET	ESD Audit Kit	Complete Test Kit
7110.B530.SET.WT	ESD Audit Kit	Complete Test Kit
EFM250	Static Field Meter	Pocket Sized
SRM310	Surface Resistance Meter	Pocket Sized
SRM330	Surface Resistance Meter	Travel Probes
SRM500K	Surface Resistance Meter	Verification Kit



EFM250

### Features:

- Hold button captures transient readings
- Ergonomic Design
- Large LCD Results display
- Measurement Range:  
± 0 ~ 20.0 kV



SRM500K

### Features:

- Measures Temperature and Humidity
- Probes: Two 5 Pound Probes
- Carrying Case
- Test Voltage: 10V/100V
- Accuracy: +/- 10%

## WALKING TEST KITS & CHARGED PLATE MONITOR



7100.CPM74

### Features:

- Measure air ionizers performance
- Quickly and easily test ionizer decay times and offset voltage
- Easy 2 button operation
- Compact and portable
- 6 hour operating time (battery powered)



7110.600.SET

### Applications:

- Evaluate packaging materials
- Evaluate garments
- Measure flooring, work surfaces and furniture resistance
- Measure electrostatic fields
- Measure temperature and relative humidity
- Analyze ionizers performance

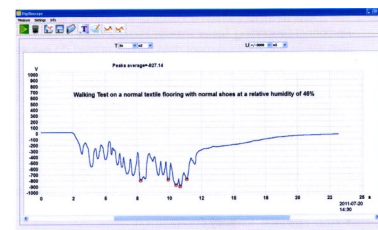


SR0065

Pair with a Surface Resistance Meter to RTG, RTT, and other resistance measurements.



7100.WT5000.B



Walking Test Graph

Part Numbers	Category	Feature
7100.CPM74	Charge Plate Monitor	Ionizer Verification
7100.WT5000.B	Walking Test Kit	Floor Testing
7100.EFM51.WT	Walking Test Kit	Portable Floor Testing
7110.600.SET	ESD Audit Kit	Complete Test Kit
7110.600.SET.WT	ESD Audit Kit	Complete Test Kit
7110.B530.SET	ESD Audit Kit	Complete Test Kit
7110.B530.SET.WT	ESD Audit Kit	Complete Test Kit

### Accessories

SR0065	Accessory
7100.TF530	Accessory
7220.880.SET	Accessory
7220.890.WE.SET	Accessory
7220.15	Accessory
7220.45	Accessory
7200.90	Accessory
7200.CL.49	Accessory

### WT5000 Walking Test Graphing Kit

A complete system to measure the body voltage generated while walking, the result of which is graphed via a PC and shown with LED on the instrument. The graphing software can mark the five highest peaks automatically and calculates the average value which creates the graph needed to qualify an ESD flooring system.

Part Numbers	Category	Feature
GTS600K	Combination Tester	Low Cost
GTS900K	Combination Tester	Split Foot Plate
PDT800K	Combination Tester	Near-Fail Alert

## COMBINATION TESTERS

### GTS900K

#### Features:

- 100% Independently Tests Both Feet
- 9 Volt Test
- Molded Foot Plate
- Wrist Strap Test Limits: 750K~12Meg Ohm (Default)
- Footwear Circuit : 750K~120Meg Ohm (Default)



### PDT800K

#### Features:

- Digital Readout
- 100% Independently Tests Both Feet
- Human Body Noise Filtration
- Wrist Strap Test Limits: 1Meg~35Meg Ohm (Default)





# PGT120.COM.US - Data Management with RS232 Interface



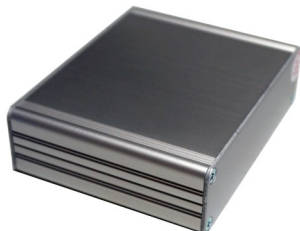
7100.PGT120.COM.US

The PGT120.COM includes an additional RS232 interface to process measurement data and test results in a data base. A computer or a terminal can be connected to the serial RS232 interface.

All operator activity is logged into a central database to meet the ANSI/ESD S20.20 requirements for ongoing quality control purposes. Each log entry includes operator identification, test results, resistance measurements, time, temperature and humidity. User identification is done through USB input devices (RFID, Barcode, Magnetic Card, Keypad) and is ready to integrate into existing infrastructure. A central data collecting and control server synchronizes measurement data.

7100.PGT120.COM.SOFT

## Choose Your Data Terminal



Data Terminal 2

The PGT120 Data Terminal 2 is the base system that is ready to integrate into existing HID infrastructure. Systems can be connected via USB and an open database interface is used.



Data Terminal 3+

The PGT120 Data Terminal 3+ is equipped with a built-in RFID reader for employee identification. Also includes a display, a relay to open doors/barriers and 4 USB ports.



Data Terminal TC18

The PGT120 Data Terminal TC18 is a 10" touch screen MiniPC that can display test results as well as store data. Includes 4 USB ports, LAN-Port RJ45 and RS232 ports. The housing is durable aluminum with front panel mounting.

## Choose How To Mount The PGT120.COM



Pedestal Stand

Place your PGT120 on a pedestal stand for a clean look in your test area! The pedestal stand is perfect for areas that a wall mount won't work.



Wall Mount

Mount your PGT120 securely to wall using the wall mount option. This allows you to keep the unit off the floor and open up more space.



Turnstile Housing

Create the ultimate entrance to your protected work area with a housing unit for the TC18 touch screen on-top of a fail/pass turnstile unit.



## Choose Your Accessories

Part Number	Description
7100.PGT120.COM.D2	Label Printer for the PGT120.COM
7100.PGT120.COM.TEST10	Temperature and humidity sensor
7100.PGT120.COM.TEST11	Keypad for PGT120
7100.PGT120.COM.TEST12	Relay Module
7100.PGT120.COM.TEST13	Visual Signal Lamp
7100.PGT120.COM.TEST15	Bar Code Scanner
7100.PGT120.COM.TEST16	USB Hub
7100.PGT120.CU.12	Calibration Unit
7100.PGT120.WK	Wall mount
7100.PGT120.SM	Mat for footwear electrode
7100.PGT120.XK.V3	RFID Card Reader
7100.PGT120.CU.12	Calibration Unit for PGT120.COM
7100.PGT120.SM	Mat for footwear electrode

## PGT120 TEST KITS

The 100 series PGT120 kits feature a non data logging PGT120 accompanied with your desired mounting method. The rest of the kits feature the PGT120 with RS232 interface and data logging capabilities. The software must be purchased to allow access to the database. This is a one time purchase and works with up to 32 testers on the same network.

To save valuable space, the PGT120 can be mounted the wall using a steel mounting plate (7100.PGT120.WK). Our free standing pedestal stand provides the ability to move the tester around and house accessories such as the data terminal or card readers. The PGT120 can be integrated into barrier systems such as a door, gate or turnstile using a relay module. The tester includes a NO/NC switch.

Each kit with data logging capabilities comes with a keypad, temp/RH sensor, and USB hub. Additional HID input devices can be purchased and configured with the unit. These include an external card reader, barcode scanner or magnetic card stripe reader.

### Software and HID Input

Part Numbers	Description
<i>Software</i>	
7100.PGT120.COM.SOFT	Software for Data Collection
<i>Additional HID Input</i>	
7100.PGT120.XK.V3	External Card Reader
7100.PGT120.TEST.15	Barcode Scanner
7100.PGT120.TEST.17	Magnetic Card Stripe Reader

### 100 Series: PGT120—Non Data Logging Kits

Part Numbers	Description
PGT120K110	PGT120.US ESD Tester, Footplate with Cables and Wall Mount
PGT120K120	PGT120.US ESD Tester, Footplate with Cables and Pedestal Stand
PGT120K130	PGT120.US ESD Tester, Footplate with Cables and Standard Turnstile
PGT120K140	PGT120.US ESD Tester, Footplate with Cables and FastPass Turnstile



PGT120K110



PGT120K240

### 200 Series: PGT120.COM—Data Terminal 2 Kits

Part Numbers	Description
PGT120K210	PGT120.COM ESD Tester, Footplate with Cables, Data Terminal 2, Wall Mount
PGT120K220	PGT120.COM ESD Tester, Footplate with Cables, Data Terminal 2, Pedestal Stand
PGT120K230	PGT120.COM ESD Tester, Footplate with Cables, Data Terminal 2, Standard Turnstile
PGT120K240	PGT120.COM ESD Tester, Footplate with Cables, Data Terminal 2, FastPass Turnstile



PGT120K320

### 300 Series: PGT120.COM—Data Terminal 3 Kits

Part Numbers	Description
PGT120K310	PGT120.COM ESD Tester, Footplate with Cables, Data Terminal 3, Wall Mount
PGT120K320	PGT120.COM ESD Tester, Footplate with Cables, Data Terminal 3, Pedestal Stand
PGT120K330	PGT120.COM ESD Tester, Footplate with Cables, Data Terminal 3, Standard Turnstile
PGT120K340	PGT120.COM ESD Tester, Footplate with Cables, Data Terminal 3, FastPass Turnstile



PGT120K430

### 400 Series: PGT120.COM—Data Terminal TC18 Kits

Part Numbers	Description
PGT120K410	PGT120.COM ESD Tester, Footplate with Cables, Data Terminal TC18, Wall Mount
PGT120K420	PGT120.COM ESD Tester, Footplate with Cables, Data Terminal TC18, Pedestal Stand
PGT120K430	PGT120.COM ESD Tester, Footplate with Cables, Data Terminal TC18, Standard Turnstile
PGT120K440	PGT120.COM ESD Tester, Footplate with Cables, Data Terminal TC18, FastPass Turnstile

## PGT130DT Personnel Grounding Tester

The PGT130.DT personnel grounding tester takes quick and accurate resistance measurements of the ESD grounding products with the ability to store test data in SQL database on your network. Access to this information is valuable to your quality program. The unit operates with 3 independent measuring circuits for the left shoe, the right shoe and the wrist strap. The shoes can even be measured in a hands free mode which means that the staff members are tested automatically when standing on the plate. PGT130.DT can be connected to an automatic door opening system which allows entry with only passing results.

### Data Collection

The PGT130.DT has a built in Data Terminal which collects ESD tests measurement data:

- Central data collecting and control server synchronizes measurement data and access control
- Open database interface for connecting customer systems
- User identification with any RFID HID input device
- Optional USB relay to trigger a turnstile

Measurements								
	Date	Time	Shoe left	Shoe right	Wrist strap	Result	Temp.	RH
1	2013-09-11	09:28	15.0 MΩ	3.3 MΩ	2.5 MΩ	OK	22.4	45.4
2	2013-09-11	09:28	47.0 MΩ	3.5 MΩ	2.5 MΩ	8	22.4	45.4
3	2013-09-11	09:28	14.2 MΩ	3.2 MΩ	2.6 MΩ	OK	22.4	45.4
4	2013-09-11	09:28	6.0 MΩ	3.2 MΩ	2.4 MΩ	OK	22.4	45.4
5	2013-09-11	09:28			2.4 MΩ	OK	22.4	45.4
6	2013-09-11	09:28	4.2 MΩ	69.6 MΩ		32	22.4	45.4
7	2013-09-11	09:27	4.3 MΩ	33.0 MΩ		OK	22.4	45.5
8	2013-09-11	09:27	4.6 MΩ	32.8 MΩ		OK	22.4	45.5
9	2013-09-11	09:27	27.5 MΩ	1.5 MΩ		OK	22.4	45.5
10	2013-09-11	09:27	29.8 MΩ	3.6 MΩ		OK	22.4	45.5
11	2013-09-11	09:27	27.8 MΩ	3.6 MΩ		OK	22.4	45.5
12	2013-09-11	09:27	18.4 MΩ	3.4 MΩ		OK	22.4	45.5
13	2013-09-11	09:27	9.7 MΩ	3.7 MΩ		OK	22.4	45.5
14	2013-09-11	09:26	34.3 MΩ	3.6 MΩ		OK	22.3	45.5
15	2013-09-11	09:26	8.7 MΩ	3.7 MΩ		OK	22.3	45.5
16	2013-09-11	09:26	5.1 MΩ	4.1 MΩ		OK	22.3	45.5
17	2013-09-11	09:26	4.2 MΩ	5.8 MΩ		OK	22.3	45.5
18	2013-09-11	09:26	5.5 MΩ	4.5 MΩ		OK	22.3	45.5
19	2013-09-11	09:25	4.3 MΩ	5.7 MΩ		OK	22.2	45.4
20	2013-09-11	09:25	5.3 MΩ	4.4 MΩ		OK	22.2	45.4

Pair the unit with the PGT130.DT Data Terminal and you receive real-time ESD testing with personnel identification, access control and central data maintenance. Also connect to a number of accessories such as a label printer, bar code scanner, RFID, data-base server and much more.

- Ready to integrate into existing infrastructure
- Multiple PGT130.DT stations can be networked
- Existing identity cards or time attendance cards can be re-used
- Open database interface
- Measurement data is ready to process after a few seconds
- SQL based database
- Combine with existing access systems is possible
- Secure network communication



### Data Management

The PGT130.DT includes an additional RS232 interface to process measurement data and test results in a data base. A computer or a terminal can be connected to the serial RS232 interface. The following data is available in ASCII format:

- Value Footwear in Series: Value in kOhm
- Value Wrist Strap System: Value in kOhm
- Value of Left Foot: Value in kOhm
- Value of Right Foot: Value in kOhm
- Test OK: OK
- Test Failed: Error no.



Part Numbers	Description
PGT130K110	PGT130.DT ESD Tester, Footplate with Cables, Temp/RH sensor and Wall Mount
PGT130K120	PGT130.DT ESD Tester, Footplate with Cables, Temp/RH sensor and Pedestal Stand
PGT130K130	PGT130.DT ESD Tester, Footplate with Cables, Temp/RH sensor and Standard Turnstile
PGT130K140	PGT130.DT ESD Tester, Footplate with Cables, Temp/RH sensor and FastPass Turnstile
<i>Software</i>	
7100.PGT120.COM.SOFT	Software for Data Collect—One copy required for up to 32 testers
<i>Accessories</i>	
7100.PGT130DT.CU	Calibration Unit
7100.PGT130DT.TF	Temperature and humidity sensor
7100.PGT120.SM	Mat for footwear electrode
7100.PGT120.TEST.13	USB HID Visual Signal Light
7100.PGT120.COM.D.2	Smart Label Printer SLP 650



## TX4000 Series ESD Cleanroom Garment System

Transforming Technologies TX4000 ESD Cleanroom Garment System protects the environment from the number one source of contamination and static found in cleanrooms - people. Electrostatic charge is an invisible contaminant and has the potential to degrade or destroy both product and equipment, as well as attract unwanted particles. Controlling these charges with the TX4000 Garment System throughout the controlled environment is essential to a productive manufacturing process. Each component—hood, coverall, boots—are connected with a ground snap and a conductive sole on the boot eliminates static on the personnel through the ESD floor or mat in cleanrooms.

- Designed for mobile workers in cleanrooms and controlled environments when ESD protection is paramount
- Electrical continuity from hood-to-boot with dissipative fabric, conductive seams and snaps
- ISO 6, Cleanroom class 1,000
- Complies with IEST-RP-CC052.1 and ANSI/ESD S20.20



### ESD-Safe Integrated Cleanroom Design

Groundable from head-to-boot, the TX4000 ESD Cleanroom Garment System is made with a reliable ISO 6 static dissipative fabric with each component—hood, coverall, boots—connected with conductive thread and ground snaps. Conductive boot soles eliminate static from personnel through the cleanroom ESD floor or mat. The garments system's superior workmanship and reliable panel-to-panel continuity makes it compliant with IEST-RP-CC052 and ANSI ESDS.2020 standards. The TX4000 Garment System maintains consistent continuity readings for up to 100 wash cycles.



#### Technical Data

ISO Cleanroom	ISO 6
ESD Standards	ANSI/ESD S20.20
	IEST-RP-CC052.1
Product Circularity	Reusable
Surface Resistivity	Dissipative: $10^7$
Cuffs	ESD Knit Cuff
Collar	Military Collar
Fabric	99% Polyester, 1% Carbon
Closure	Zipper with Snap
Colors	White, Navy Blue

### ESD Coverall

- Raglan sleeves with ESD knit cuffs for body contact
- Military collar
- Snaps at top of zipper and bottom of leg hem and zipper closure for easy gowning
- Grounding snaps for connection to component (hood, boots)
- Seams sewn with conductive threads and grounding tape for reliable panel-to-panel electrical continuity
- ISO Cleanroom: ISO 6 (Class 1000)
- Meets standards required for ANSI/ESD S20.20 and STM9.1 - Footwear – Resistive Characterization



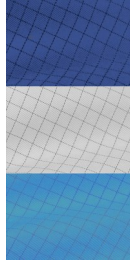
Part Number	Size
TX40CRWH01	XS
TX40CRWH02	S
TX40CRWH03	M
TX40CRWH04	L
TX40CRWH05	XL
TX40CRWH06	2XL
TX40CRWH07	3XL
TX40CRWH08	4XL
TX40CRWH09	5XL

Replace "WH" with "NB" for Navy Blue  
Or "LB" for light blue\*



Typical System Resistance:  $<3.5 \times 10^7 \Omega$

- PSTAT ESD hard sole with twill reinforcement
- Combination 1" elastic and webbing at top of closure with snap adjustment
- Replaceable 18" internal ground ribbon attachment included, with 24" long ground ribbon available for boots
- Internal snaps to electrically connect to coverall
- ISO Cleanroom: ISO 6 (Class 1000)
- Meets standards required for ANSI/ESD S20.20 and STM9.1—Footwear—Resistive Characterization



\*

Light blue is a non-stock product

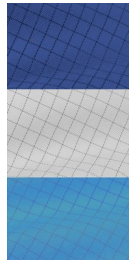
Part Number	Size
TX40BHHW01	XS
TX40BHHW02	S
TX40BHHW03	M
TX40BHHW04	L
TX40BHHW05	XL
TX40BHHW06	2XL

Replace "WH" with "NB" for Navy Blue  
Or "LB" for light blue\*



Typical System Resistance:  $<3.5 \times 10^7 \Omega$

- Three layer ESD rubber soft sole (non-marking rubber inside and outside)
- Hypalon Side Wall
- Combination 1" elastic and webbing at top of closure with snap adjustment
- Replaceable 18" internal ground ribbon attachment included, with 24" long ground ribbon available for boots
- Internal snaps to electrically connect to coverall and ground ribbon
- ISO Cleanroom: ISO 6 (Class 1000)
- Meets standards required for ANSI/ESD S20.20 and STM9.1—Footwear—Resistive Characterization



\*

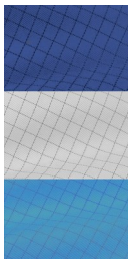
Light blue is a non-stock product

Part Number	Size
TX40BEWH01	XS
TX40BEWH02	S
TX40BEWH03	M
TX40BEWH04	L
TX40BEWH05	XL
TX40BEWH06	2XL

Replace "WH" with "NB" for Navy Blue  
Or "LB" for light blue\*



- Open face with snap-under-the-chin closures
- Two vertical snaps at each side of temples
- Roll hem
- Electrically connects to ESD coverall for ground continuity with two snaps
- ISO Cleanroom: ISO 6 (Class 1000)
- Meets standards required for ANSI/ESD S20.20



\*

Light blue is a non-stock product

Part Number	Size
TX40HFWH01	XS
TX40HFWH02	S
TX40HFWH03	M
TX40HFWH04	L
TX40HFWH05	XL
TX40HFWH06	2XL

Replace "WH" with "NB" for Navy Blue  
Or "LB" for light blue\*

# CLEANROOM FROCKS

## TX4000 Series

Part Number	Size
TX40FRWH01	XS
TX40FRWH02	S
TX40FRWH03	M
TX40FRWH04	L
TX40FRWH05	XL
TX40FRWH06	2XL
TX40FRWH07	3XL
TX40FRWH08	4XL
TX40FRWH09	5XL



Replace "WH" with "NB" for Navy Blue

- Raglan sleeves with ESD knit cuffs for body contact
- Military collar
- Zipper closure with snaps for easy gowning
- Seams sewn with conductive threads and grounding tape for reliable panel-to-panel electrical continuity
- Maintains consistent readings after 100 washes
- SO Cleanroom: ISO 6 (Class 1000)
- Meets standards required for ANSI/ESD S20.20

## Washable Shoe Covers



- ESD shoe cover with 3 layer dissipative rubber soft sole
- Replaceable 10" conductive ribbon for contact with the body
- Conductive ribbon connected to sole with Internal snap
- Dissipative sole & ESD canvas fender - 10<sup>7</sup>
- Meets requirements of ANSI/ESD S20.20-2014 section ANSI/ESD STM2.1-2013 (Garments)

Part Number	Size
SC50BSWH01	XS
SC50BSWH02	S
SC50BSWH03	M
SC50BSWH04	L
SC50BSWH05	XL
SC50BSWH06	2XL
SC50BSWH07	3XL
SC50BSWH08	4XL
SC50BSWH09	5XL

## Disposable Shoe Covers



### Specifications:

- Material: 100% Virgin Polypropylene
- Weight 1.25oz (40 gm)
- Color: Blue
- Sole Type: Non-Skid coated
- Surface Resistance: <10<sup>6</sup> Ohms
- Packaged 100 per bag
- Sizes: SC1207C Universal  
SC1207C-XL Extra Large

## Cleanroom Waste Basket



WBAS28-MET

### Features:

- Cleanroom Waste Basket
- Stainless Steel
- 7 Gallon Capacity

## MT5500 Series IDP-STAT Cleanroom Table Mat



### Specifications:

- 1MM Thickness
- Transparent
- TPU Alloy
- Available in 50 foot rolls or cut mat sizes

## ESD Wipers

### WPBEMM-3II



### Features:

- Excellent Ant-Static and Heat Resistance
- Extremely Absorbent: Absorbs 13 Times it Weight
- Made from 100% Cotton
- Non-Woven, Low Linting
- Dimensions: 10x10 inch

### WP6200



### Features:

- ESD Wipes for all Electronic Manufacturing
- 100% Knitted Polyester
- No Carbon or Metal Fibers
- Less than 100 Volts Tribocharge
- Dimensions: 9x9 inch

### WP7200



### Features:

- 100% Continuous Polyester Filament with Conductive Carbon Yarn
- Static Dissipative on Both Sides
- Good Solvent Resistance
- Dimensions: 9x9 inch

### WP8200



### Features:

- 100% Continuous Polyester Filament with Conductive Carbon Yarn
- Inspection Wipe: Black color shows contamination to ensure cleanliness
- Good Solvent Resistance
- Dimensions: 9x9 inch



# ESD ACCESSORIES



LB9010 5/8" x 2"



LB9060 1" x 2-1/2"



LB9083 4" x 4"  
LB9082 2" x 2"



CL Tape



CL-P Tape



CT Tape



AM2401, AM3602



DC1185.IDP



ESDC1003C



WC2436B  
WC4836B  
WC7236B



ESDKB2000

ESDCM1000



MP7575



TD3023



DC2000



SX5007



CA5003



BT1006

BT1002-F

BT1008



PM1504

PM 1501



WBAS28



WBAS90



WBAS180



Dissipative



Conductive



WBASDM



SM0810



SM0873, SM0874,  
SM0875, SM0876

SM0880, SM0881,  
SM0882, SM0883

Waste Baskets	Description
WBAS28	7 Gallon Waste Basket
WBAS90	22 Gallon Waste Basket
WBAS180	44 Gallon Waste Basket
WBASDM	Metal Dolly for WBAS180
WBAS-LP	Dissipative Trash Liners 7-10 Gallon
WBAS-LB	Conductive Trash Liners 7-10 Gallon
WBAS22-LP	Dissipative Trash Liners 22 Gallon
WBAS22-LB	Conductive Trash Liners 22 Gallon
WBAS44-LP	Dissipative Trash Liners 44 Gallon
WBAS44-LB	Conductive Trash Liners 44 Gallon

Tape	
AM2401	ESD Aisle Marking Tape 2"x32 Yd.
AM3602	ESD Aisle Marking Tape 3"x32 Yd.
CL1200	Static Free Cellophane Tape 1/2"x72 Yd.
CL1200-P	Static Free Cellophane Tape 1/2"x72 Yd.
CL1801	Static Free Cellophane Tape 3/4"x72 Yd.
CL1801-P	Static Free Cellophane Tape 3/4"x72 Yd.
CL2402	Static Free Cellophane Tape 1"x72 Yd.
CL2402-P	Static Free Cellophane Tape 1"x72 Yd.
CL4803	Static Free Cellophane Tape 2"x72 Yd.
CL4803-P	Static Free Cellophane Tape 2"x72 Yd.
CT1204	Grid Tape, 1/2"x36 Meters
CT1805	Grid Tape, 3/4"x36 Meters
CT2406	Grid Tape, 1"x36 Meters
CT4807	Grid Tape, 2"x36 Meters

Office	
DC2000	ESD Pen, Black
DC2000R	ESD Pen, Red
DC2000BLU	ESD Pen, Blue
5221.3.IDP	Badge Holder
DC1185.IDP	Sheet Protector
ESDCM1000	ESD Computer Mouse
ESDKB2000	ESD Keyboard
CA5003	ESD Calculator
SX5007	ESD Scissors
MP7575	ESD Mousepad
TD1023	Tape Dispenser, 1 roll, 3" Cores
TD2023	Tape Dispenser, 2 rolls, 3" Cores
TD3023	Tape Dispenser, 3 rolls, 3" Cores

Miscellaneous	
SNX11X17A	ESD Sign, 11"x17"
ESDC1003C	ESD Curtain, 1.37MX30MX0.3mm
MC1221W	ESD Safe Microscope Cover
WC2436B	Workstation Cover 24"x36"
WC4836B	Workstation Cover 48"x36"
WC7236B	Workstation Cover 72"x36"
PM1501	Anti-Static Mat Cleaner, Quart
PM1504	Anti-Static Mat Cleaner, Gallon
PM2504	Anti-Static Multipurpose Cleaner, Gallon
BT1002-F	ESD Flux Bottle, 16 GA Needle, 2 oz
BT1002-F1	ESD Flux Bottle, 20 GA Needle, 2 oz
BT1002-F2	ESD Flux Bottle, 26 GA Needle, 2 oz
BT1006	ESD Solvent Bottle, 6 oz
BT1008	ESD Solvent Bottle, 8 oz

Storage	
SM0810	Compartmented Box 6 Drawers
SM0873	16x12x15mm Black Lid
SM0874	37x12x15mm Black Lid
SM0875	40x37x15mm Black Lid
SM0876	68x57x15mm Black Lid
SM0880	16x12x15mm Transparent Lid
SM0881	37x12x15mm Transparent Lid
SM0882	40x37x15mm Transparent Lid
SM0883	68x57x15mm Transparent Lid



**Transforming Technologies  
3719 King Road  
Toledo, Ohio 43617**

**Phone: 419-841-9552  
Fax: 419-841-3241**

**[info@transforming-technologies.com](mailto:info@transforming-technologies.com)  
[www.transforming-technologies.com](http://www.transforming-technologies.com)**